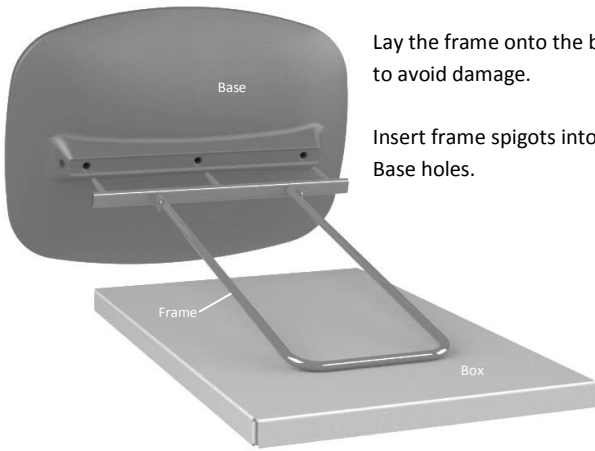


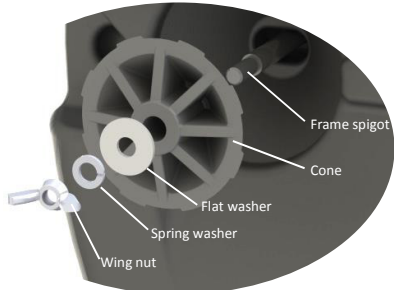
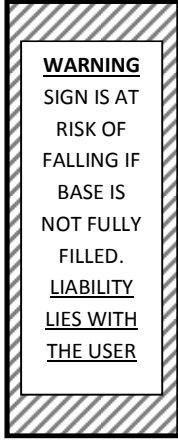
POW! Sign Frame and Water Fill Base assembly instructions...

S-0255-02 / CRN2017-163

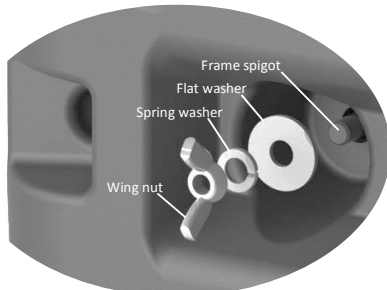


Lay the frame onto the box to avoid damage.

Insert frame spigots into the Base holes.



If assembling a small POW! Sign, there will be 2x cones to position underneath the base before adding the washers and wing nut – as shown above.

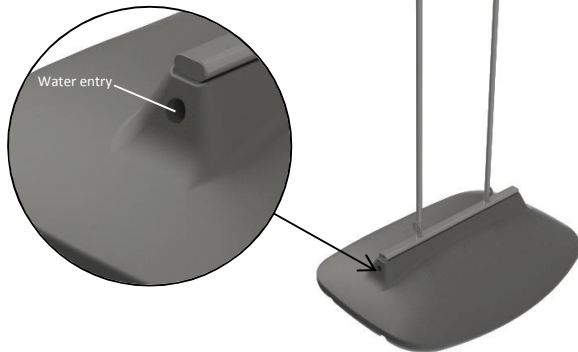


If assembling a medium or large POW! Sign, just add the washers and wing nuts to the spigots.

IMPORTANT!

Ensure base is fully filled with water to achieve required stability.

Use hose to fill base until overflowing with water.



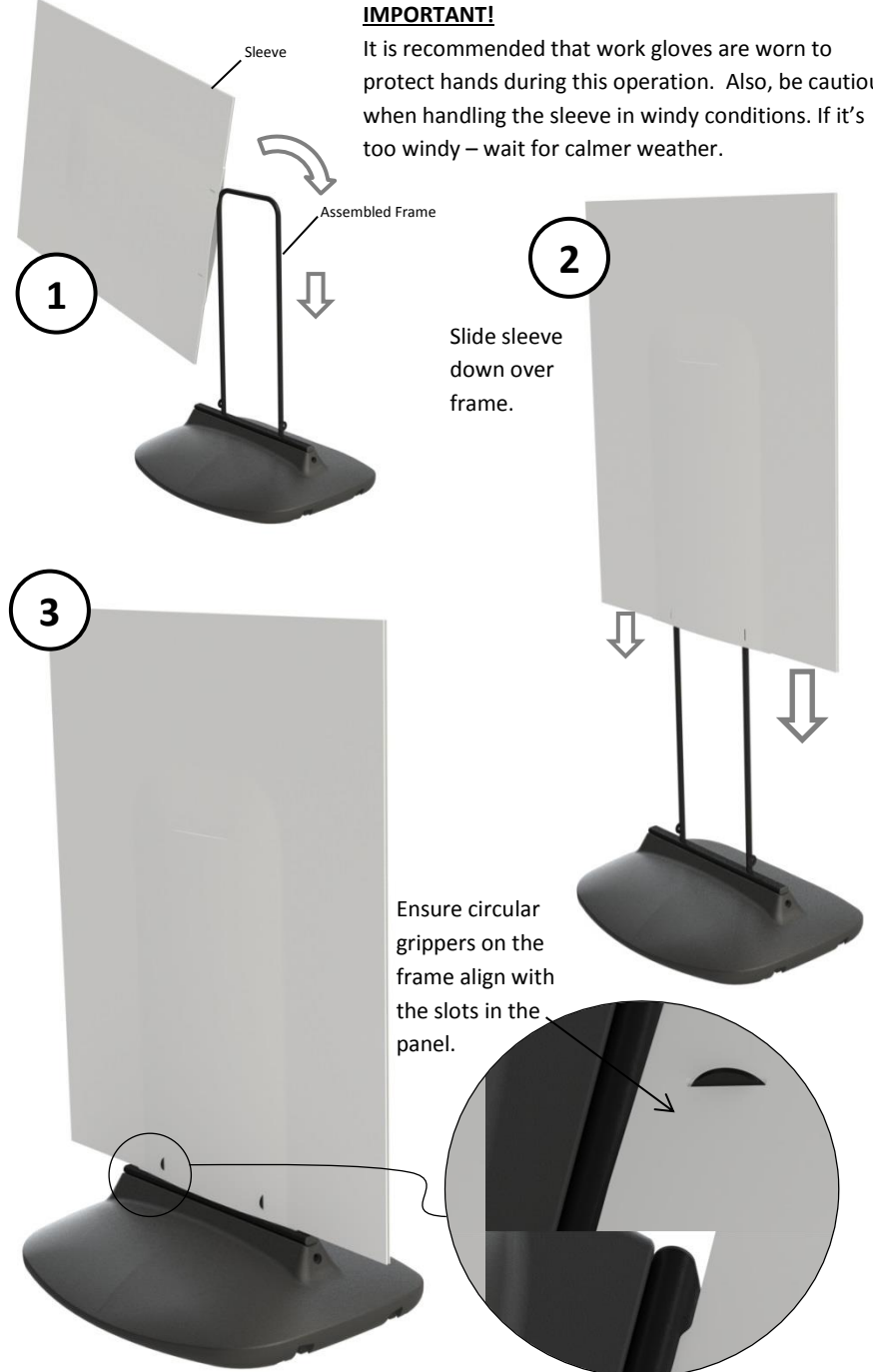
We wish to point out that it is the responsibility of the shop/site owner/user to ensure that the siting of this sign is safe and on even ground and complies with all the local By-laws and Highway Regulations. POW! Sign. Patent No. 1520080.1

POW! Sleeve assembly instructions...

S-0257-01 / CRN2016-146 (05-07-2016)

IMPORTANT!

It is recommended that work gloves are worn to protect hands during this operation. Also, be cautious when handling the sleeve in windy conditions. If it's too windy – wait for calmer weather.



1

2

3

Slide sleeve down over frame.

Ensure circular grippers on the frame align with the slots in the panel.

We wish to point out that it is the responsibility of the shop/site owner/user to ensure that the siting of this sign is safe and on even ground and complies with all the local By-laws and Highway Regulations. POW! Sign. Patent No. 1520080.1